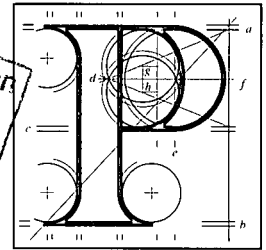


**Our Ref:** PL 16.207212  
**P.A.Reg.Ref:** P03/3343  
**Your Ref:** Corrib Gas Field



An Bord Pleanála



Ms. Ana Bolger,  
Programme Officer,  
Environmental Licensing Programme,  
Environmental Protection Agency,  
Headquarters, PO Box 3000,  
Johnstown Castle Estate,  
Co. Wexford.

Environmental Protection  
Agency  
07 APR 2014

4th April 2014

**Appeal**                      **Re:** Gas terminal.  
Bellagelly South, Srahmore, Attavally, Bangor Erris, Co. Mayo.

Dear Ms. Bolger,

I have been asked by An Bord Pleanála to refer to your letter dated 27th March, 2014 in relation to above.

An Bord Pleanála file PL 16.207212 and associated files are available to the general public in the usual way by public access arrangements through the Board. The sole purpose of the "Extranet" is to comply with section 173A of the 2000 Act as inserted by Article 8(4) of the European Union (Environmental Impact Assessment) (Integrated Pollution Prevention and Control) Regulations 2012.

Please contact the Board if you need any further information.

Yours faithfully,

Brid Tiernan  
Executive Officer  
Direct Line: 01-8737156

BP 23