

PLATES

For inspection purposes only.
Consent of copyright owner required for any other use.

- Site Location
- Supplier / Receiver Locations
- Bio energy Process
 - Trial Pit 1
 - Trial Pit 2
 - Trial Pit 3
- Field 1, facing north
- Field 1, clearance cairn, facing northeast
- Field 2, facing north
- Field 2, slight rise in the ground (APP 1) facing northeast
- Track way located within proposed development area, facing northwest

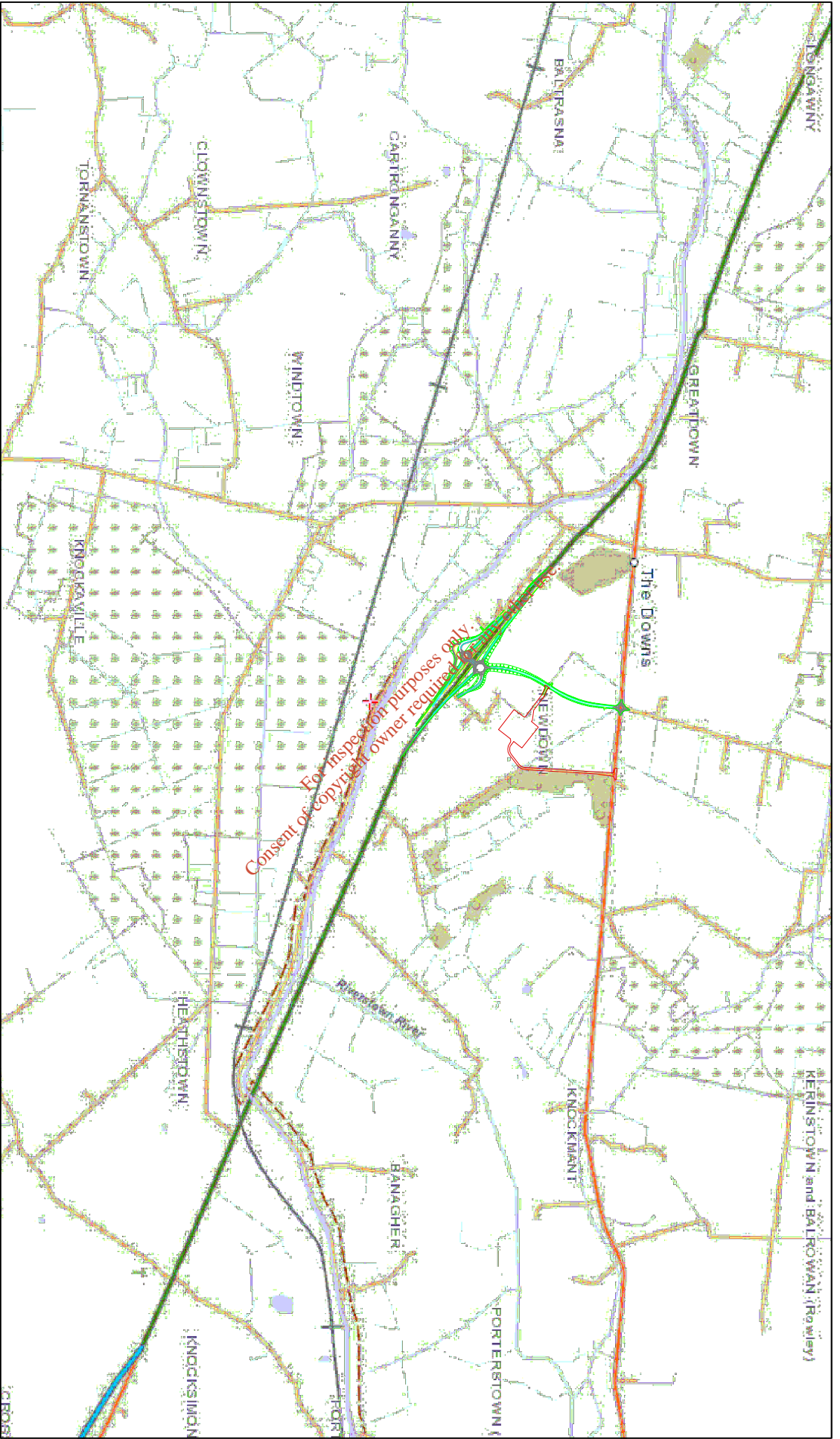
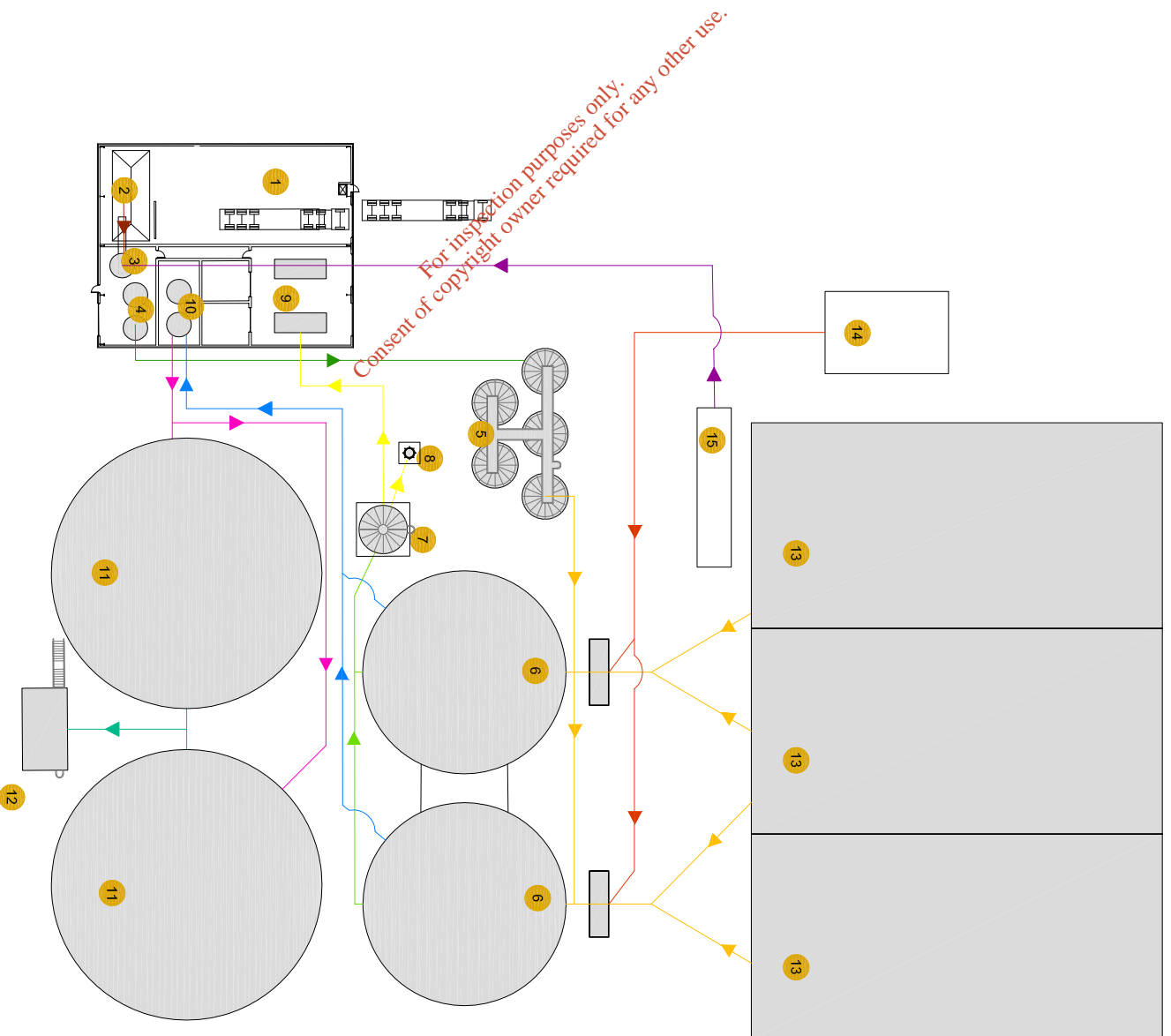
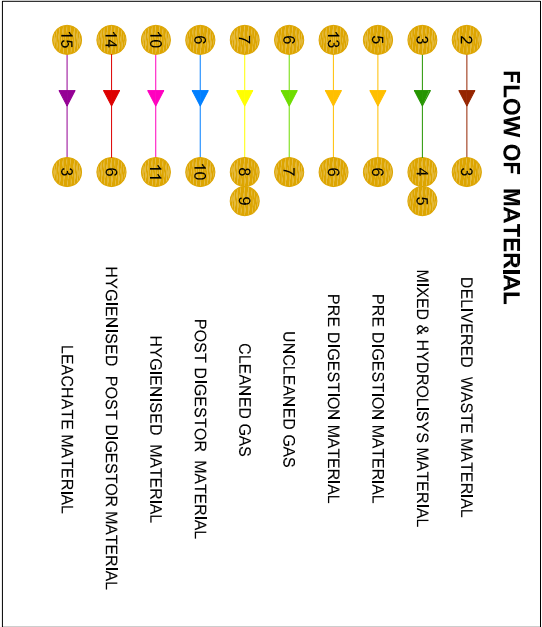
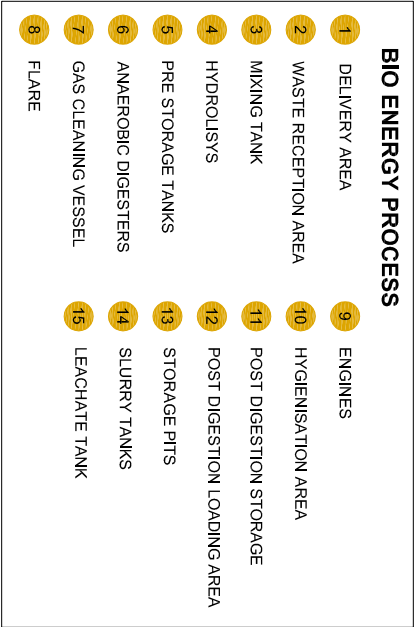


PLATE 1 SITE LOCATION

OSI MAP LICENCE NO. EN0045811



REV. NO.	DESCRIPTION	DATE	BY	CHKD.
01	ISSUED FOR PERMITS			
02	ISSUED FOR PERMITS			

REV. NO.	DESCRIPTION	DATE	BY	CHKD.
01	ISSUED FOR PERMITS			
02	ISSUED FOR PERMITS			

PROJECT NO.	PROPOSED BIOENERGY FACILITY AT NEWDOWNS, THE DOWNS, MULUNGAR, CO. WESTMEATH
DATE	07/03/2011
SCALE	AS SHOWN
PROJECT NO.	111/001/210
DATE	11/1/2010
PROJECT NO.	111/001/210
DATE	11/1/2010



PLATE 7.1 TRIAL PIT 1



PLATE 7.2 TRIAL PIT 2



PLATE 7.3 TRIAL PIT 3

Plates



Plate 8.1: Field 1, facing north



Plate 8.2: Field 1, clearance cairn, facing northeast



Plate 8.3: Field 2, facing north



Plate 8.4: Field 2, slight rise in the ground (AAP 1), facing northeast



Plate 8.5: Trackway located within proposed development area, facing northwest

For inspection purposes only.
Consent of copyright owner required for any other use.