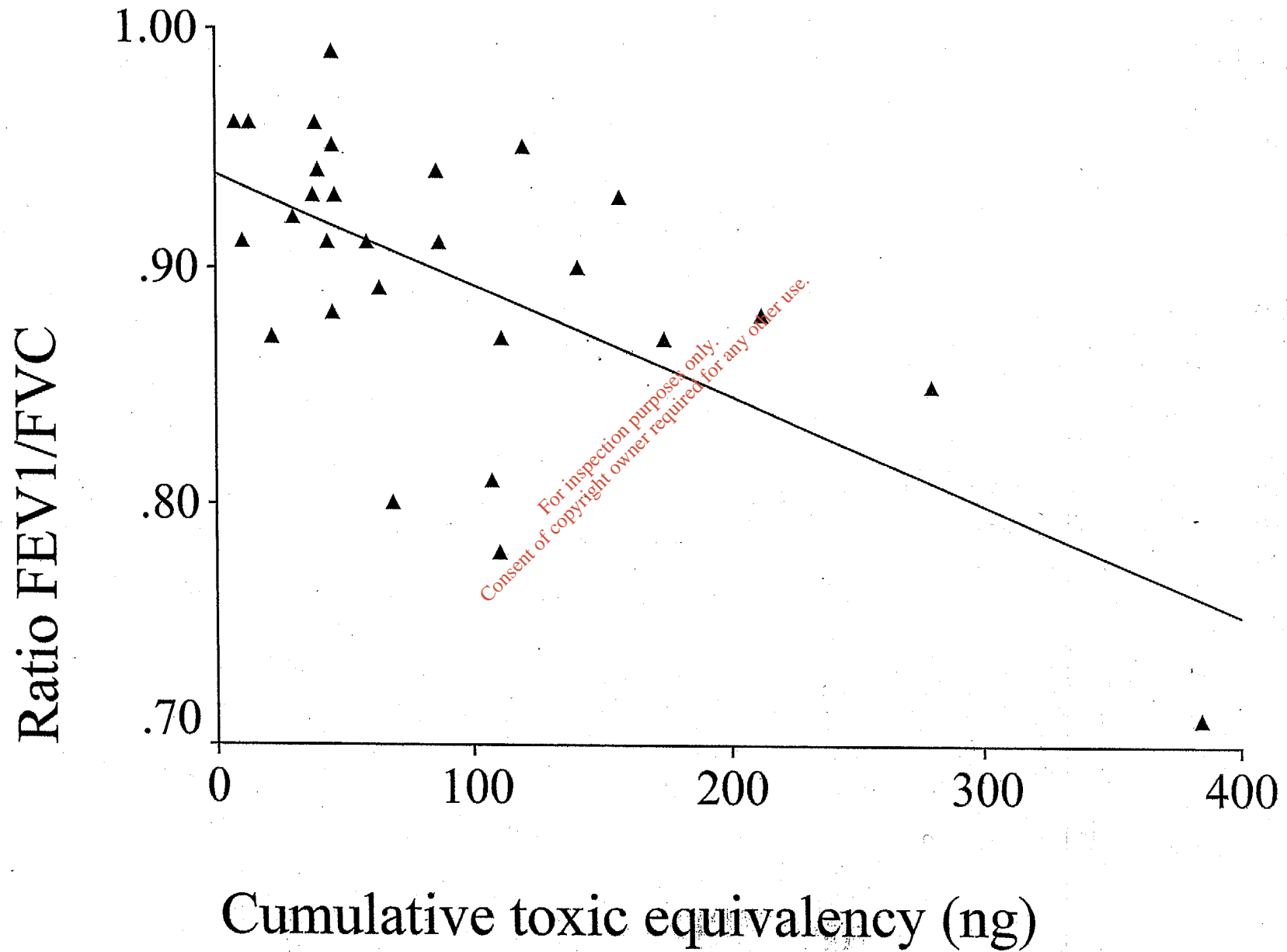
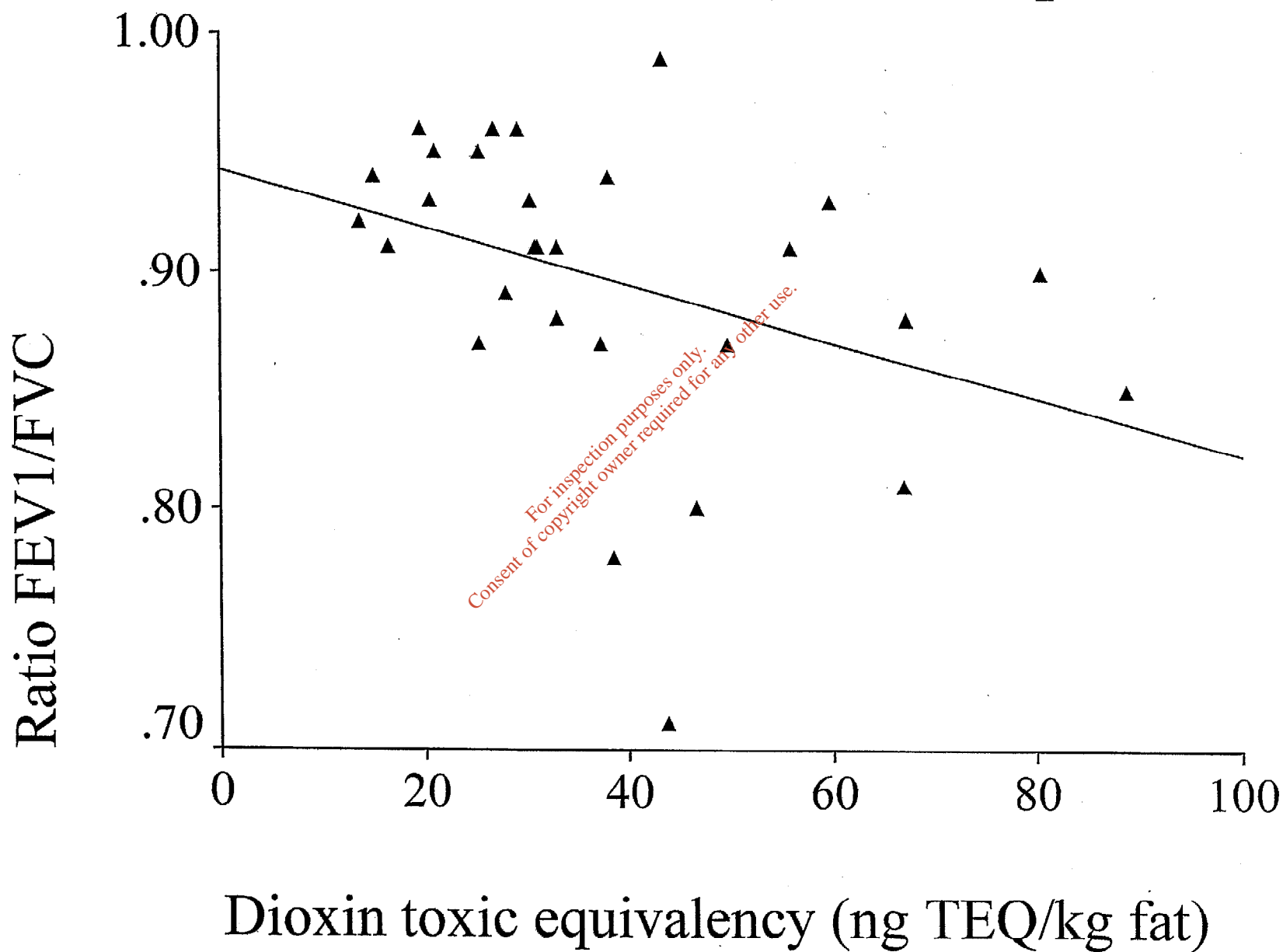


FEV1/FVC vs Postnatal Exposure

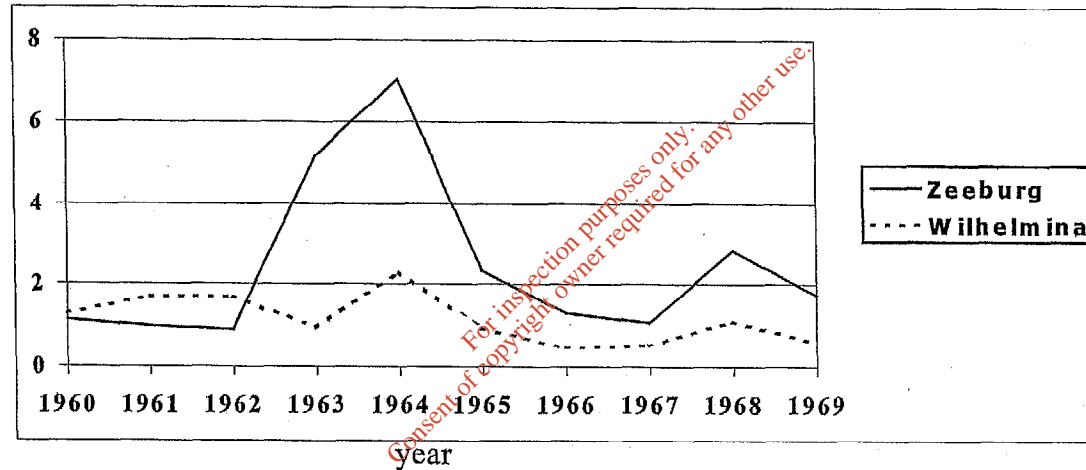


FEV1/FVC vs Prenatal Exposure



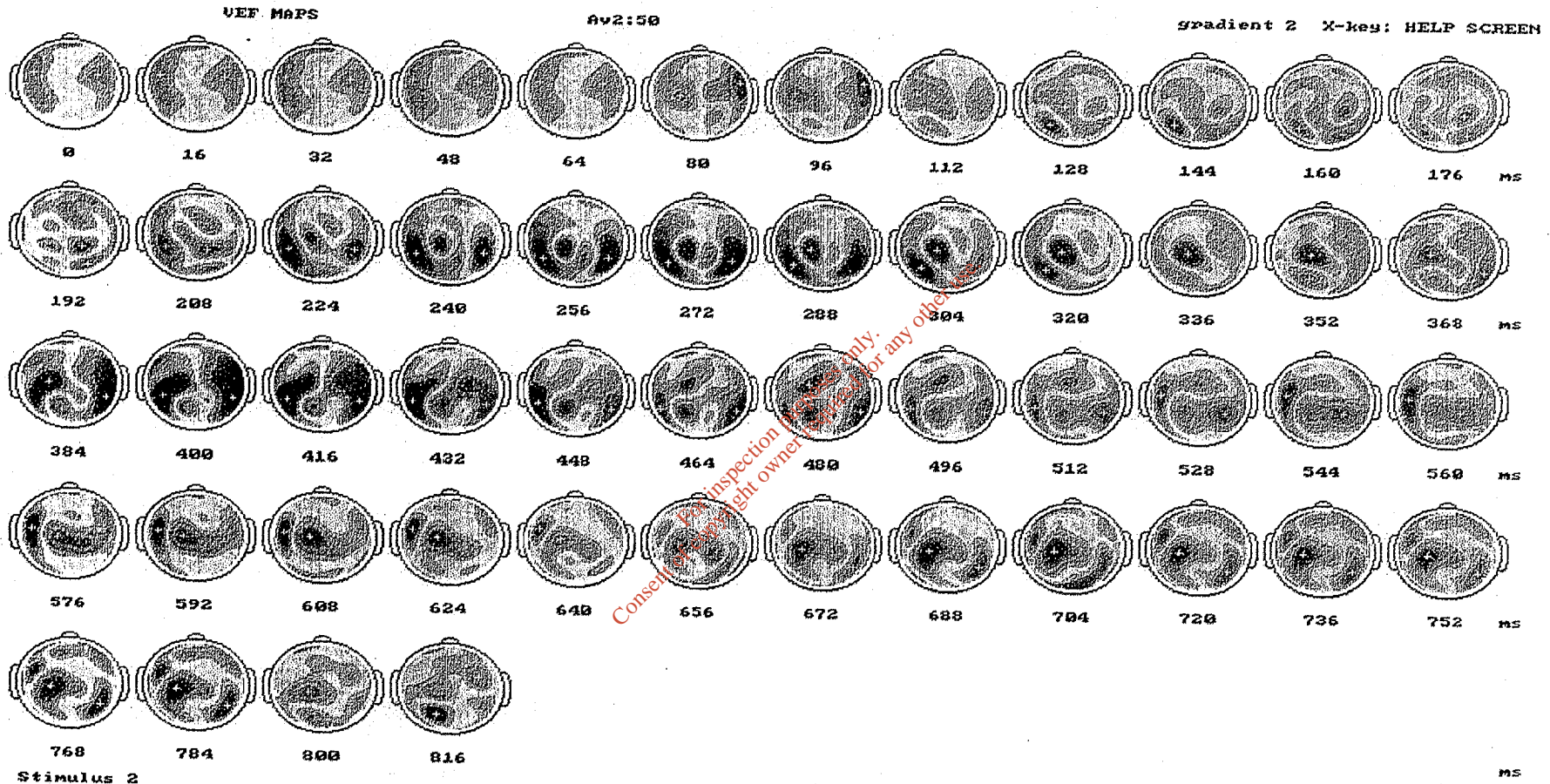
Non-syndromal orofacial clefts: trend of incidence for 1960-1969

per 1000 births (live + stillborn)



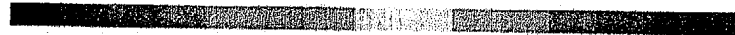
The trend of the incidence of non-syndromal orofacial clefts for the Zeeburg and Wilhelmina clinics, for the years 1960 up to and including 1969.

MEG mapping



color distance = 34 ft

-256 ft



256 ft

SD2 = 29 ft

Potential maps

With phase
High-pass filter 0.50 Hz
Low-pass filter 20.00 Hz

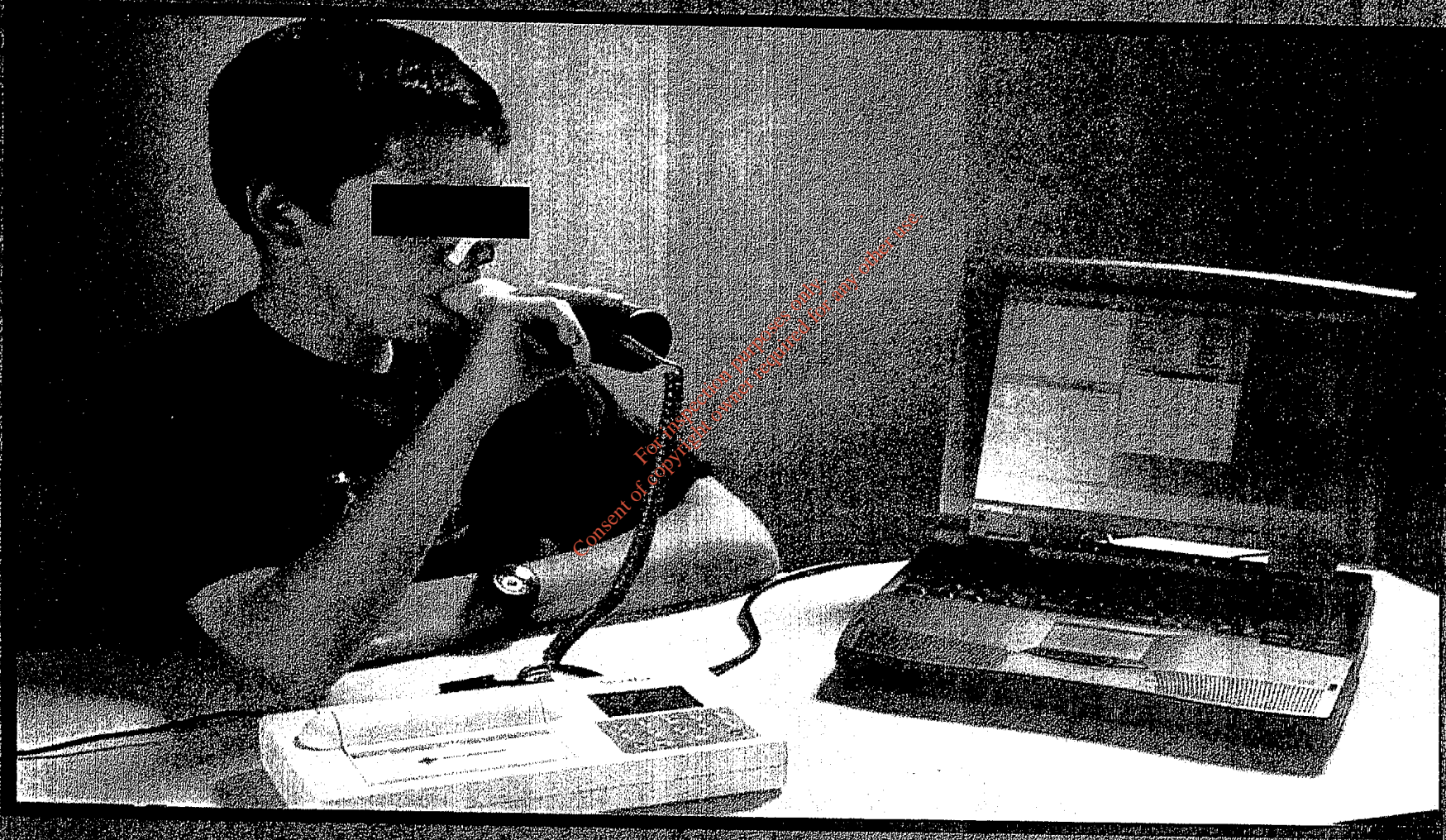
zero-level amplifier

MEG/EEG



Cork, 29-10-2003

Lung function

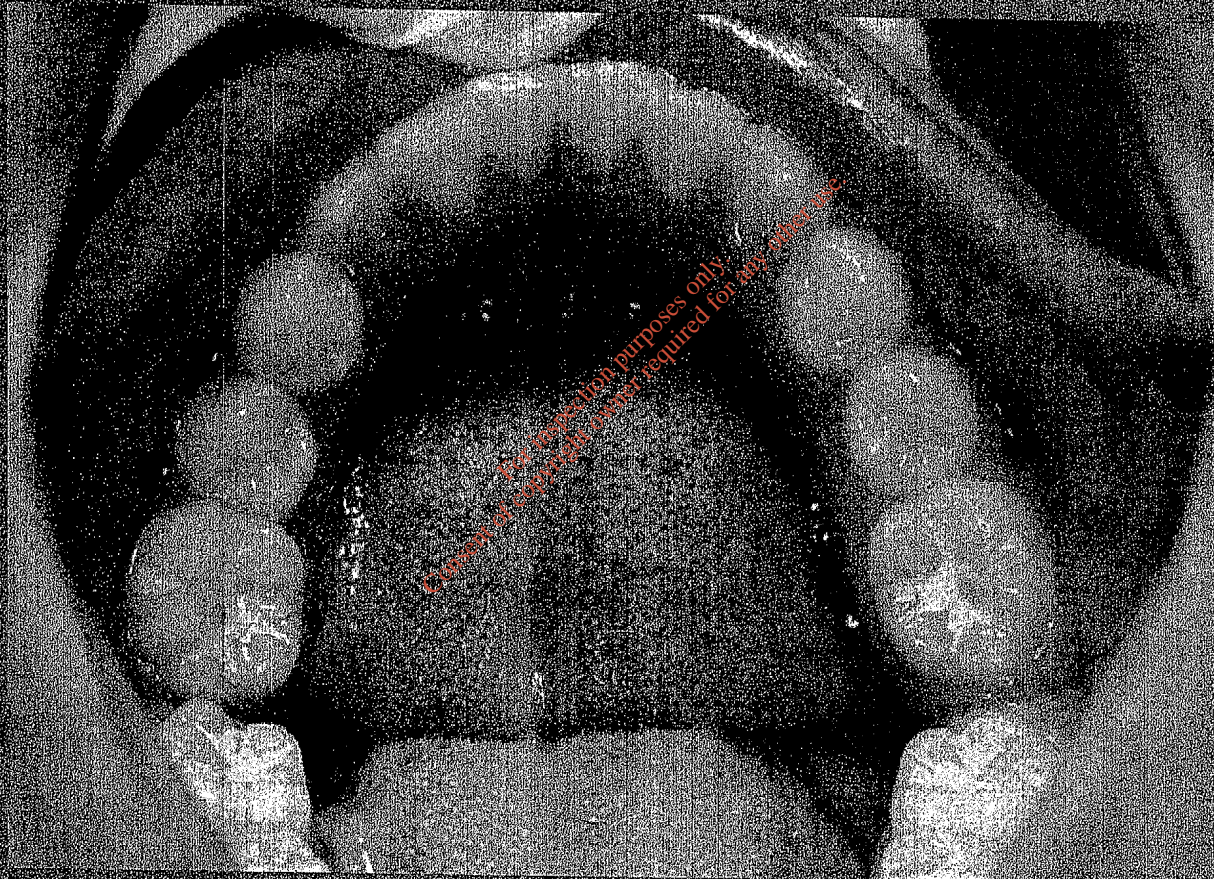


Cork, 29-10-2003

5

Gaym W. ten Tusscher

Dentition



Cork, 29-10-2003

Thrombocytes (blood platelets)

